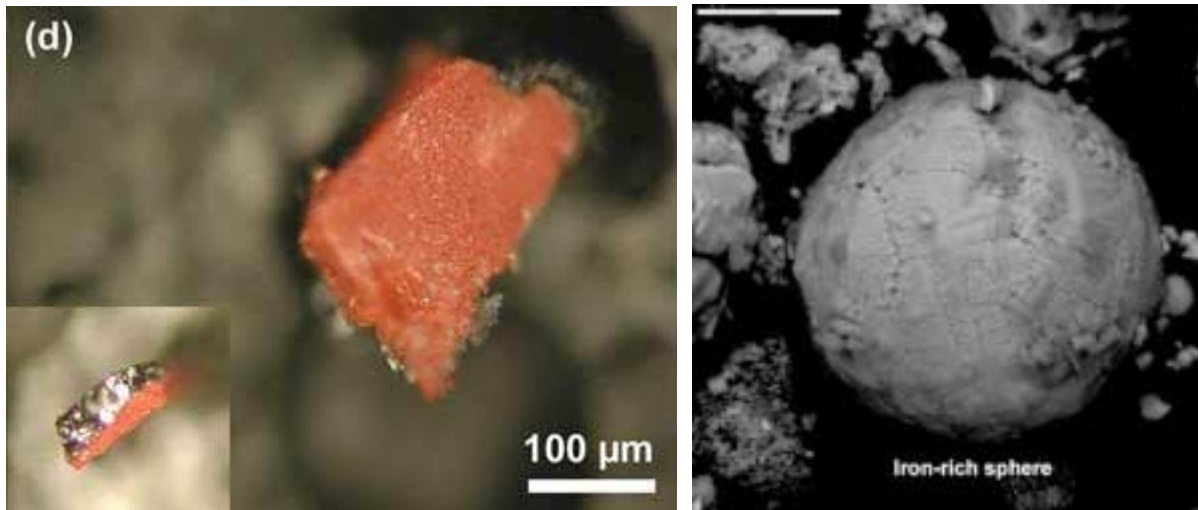


Introduction: Thermite and The Destruction of the World Trade Center

A recent scientific study titled [Active Thermitic Material Discovered in Dust from the 9/11 World Trade Center Catastrophe](#) published in April 2009 confirms that a large quantity of *thermite*, a high tech incendiary/explosive material, must have been present in the World Trade Center at the time of the attacks on 9/11. The peer reviewed forensic study appeared in The Open Chemical Physics Journal, Bentham.org.

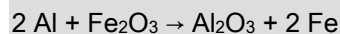
This document introduces that peer reviewed scientific research which supports a conclusion that differs markedly from that of the government funded reports that followed the destruction of the World Trade Center complex on September 11, 2001.

Thermite, a versatile incendiary/explosive compound, can be prepared in different ways to facilitate different reaction effects including high temperature burn, high energy explosion, and steel cutting. The particular form of thermite discovered in the WTC dust is a high tech variety called an 'aluminothermic nanocomposite explosive' also known as 'nano-thermite'. The WTC dust contained nano-thermite in both its pre-reaction and post-reaction state. See photos below.



Left: Pre-reaction thermite chip from a sample analyzed in the peer reviewed paper *Active Thermitic Material Discovered in Dust from the 9/11 World Trade Center Catastrophe*. Right: A 2005 USGS image showing a post-reaction iron-rich sphere from dust produced during the WTC's destruction. Both the microscopic chips and spheres were distributed throughout the recovered dust samples. A simple mass ratio calculation indicates that at least tens of tons were present in the towers at the time of the attacks.

Jim Hoffman describes the basic thermite reaction on his website 9/11Research.com:



This is the chemical equation of the most common type of thermite reaction: Two atoms of aluminum react with a molecule of iron oxide to form a molecule of aluminum oxide and two atoms of iron. Because the aluminum holds the oxygen much more tightly than does the iron, the reaction releases a great deal of energy -- about three times as much per unit of weight as is released by conventional high explosives.

The following photos show the generation and dispersal of the dust. Massive amounts of dense finely pulverized material projected from the towers, eventually coating all of lower Manhattan.



Hot dense pyroclastic plumes of pulverized building material and office contents were expelled during the destruction of both towers. *Left:* North Tower destruction. *Right:* South Tower destruction.



The fine dense dust expanded, rolling over streets and rooftops.



The massive dust cloud eventually flowed over the entirety of lower Manhattan.



Much of dust settled on the streets. Reportedly hundreds of witnesses collected portions. Four individuals contributed samples for study from locations 1-4, inset.

Dust samples were collected by dozens or perhaps hundreds of witnesses as mementos of the tragic event. Years later, 'after the dust had cleared', some covert operations specialists, military professionals, engineers, scientists and others around the world began noticing and articulating 'problems' relating to the attacks.

Scientific investigators found that the government’s building collapse analysis contained internal contradictions and violations of fundamental laws of physics. They found videographic, photographic, and physical evidence that strongly supported the hypothesis that the mode of destruction for all three buildings was in fact controlled ‘explosive’ demolition, not a pancake or progressive collapse. (Progressive collapse is a theoretical mode of failure that had never before or after 9/11 caused the destruction of a steel framed high rise.) While many are still reticent to consider the evidence, others continue to push strongly for more information, analysis and transparency. After much work the case for controlled demolition is now strongly compelling.



Architect Richard Gage describes physical anomalies contained in the government funded building collapse reports:

- Rapid onset of collapse.
- Rapid speed of collapse.
- Insufficient energy to shred or crush the building and pulverize non-steel components.
- Forceful high velocity ejection of multi ton steel beams.
- Flashes seen and explosions heard by numerous credible witnesses and captured on audio and video.
- ‘Squibs’, explosive charges visible.
- Chemical evidence of cutter charges
- Video evidence of thermite activity in the towers.
- Discovery of thermite in WTC dust.

For a detailed information on these anomalies visit *Architects & Engineers for 9/11 Truth*. www.AE911Truth.org

Right: Three frames of Danish chemist Niels Harrit of the University of Copenhagen, interview on TV2NEWS Denmark.

The video can be viewed on YouTube under the title “[A Danish scientist Niels Harrit, on nano-thermite in the WTC dust \(English subtitles\)](#)”.

http://www.youtube.com/watch?v=8_tf251x_3o



Interview with Niels Harrit, clip position 1:09 min



Interview with Niels Harrit, clip position 1:12 min



Interview with Niels Harrit, clip position 6:22 min

The growing body of work by scientists and technical experts may be found on sites like [Scholars for 9/11 Truth and Justice](http://STJ911.org) (<http://STJ911.org>), [Architects & Engineers for 9/11 Truth](http://www.AE911Truth.org) (www.AE911Truth.org), and [9/11 Research](http://www.911research.com) (www.911research.com). Numerous other websites and videos may also be found online.